

# AI VMS Mini



spark  
Italian inSight

## Custom-built Solution for Small and Medium-sized Businesses

AI VMS Mini is a one-stop solution designed by Spark for small to medium-sized environments, including residential areas, commercial buildings, parking lots, road surveillance, campuses, and factories.

Equipped with an Asus IoT industry X86 server, it supports 16 chs for surveillance, featuring high-efficiency AI chips and cutting-edge VMS technology, providing users with a comprehensive solution.

### ASUS IoT Industry X86 Server

- 16-Channel recording
- Support Master/Slave
- Support ONVIF/RTSP video input
- Third party integration (LPR/eTag)
- FCC 、CE 、RoHs

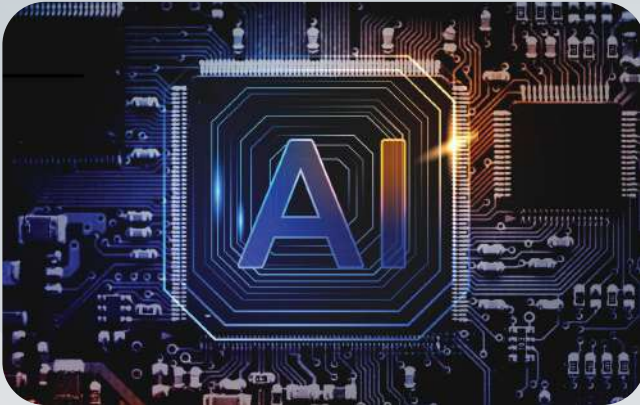


### Argo AI VMS

- AI Detection: Human, Vehicle, Smoke, Fire, ALPR
- Local/Remote IP Configuration
- Dashboard
- Health Doctor
- LINE/Email Notifications
- E-Map



## Features



### High-efficiency AI chip

Argo processes image data in real-time, identifying human, vehicle, flame and smoke, while supporting behavior detection like intrusion and loitering for enhanced monitoring efficiency.



### AI Video Analysis Management

Argo processes image data in real-time, identifying human, vehicle, flame and smoke, while supporting behavior detection like intrusion and loitering for enhanced monitoring efficiency.



### Upgrade Analog to AI

Over 60% of cameras in the market are still analog. With this device, existing cameras can be easily upgraded to AI functionality without replacement.



### Customized Dashboard

Argo offers customizable dashboard design features, including layout configurations and charts ( pie, line and bar ), making it easy for users to view all statistics.

## Features



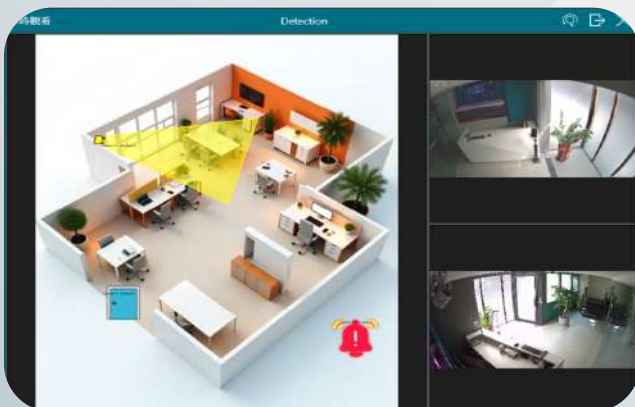
### Remote Monitoring

Supports local and remote monitoring, allowing users to view and operate through different devices such as desktop, laptop, tablet and mobile.



### Two-way Intercom

Supports two-way audio, SIP intercom and remote video calls, with all communications recorded.



### E-map

Supports importing Multi-level floor plan, making it easier to deploy monitoring devices. When an event occurs, alarms and real-time images will automatically activate to assist managers in responding quickly.



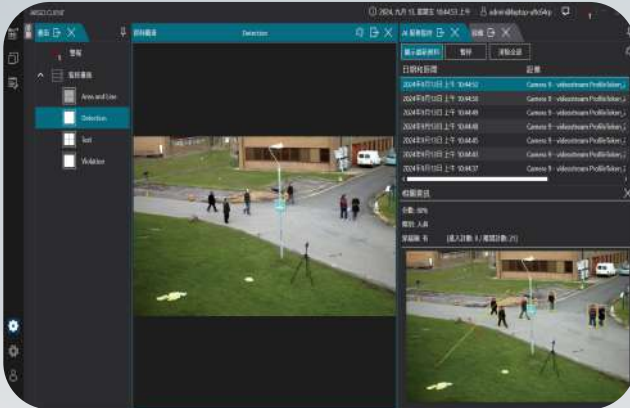
### Real-time Notification

Supports real-time notifications via email and communication apps (e.g. LINE), enabling managers to stay updated on events and take quick action to mitigate risks.





## Features



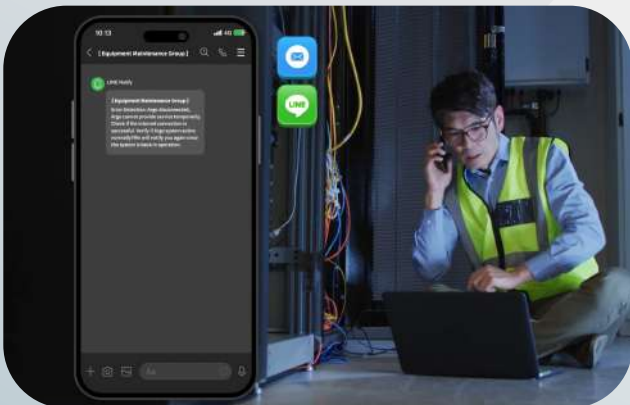
### Cross-Line Detection and Counting

Argo accurately tracks pedestrian and vehicle flow, providing object crossing detection to support technology-based law enforcement and versatile safety management.



### Multi-country ALPR

Supports license plate recognition in 80% of countries, identifying 4526 models and 194 brands, with real-time vehicle monitoring and access records.



### Health Doctor

Upon detecting anomalies, Argo immediately alerts managers and provides troubleshooting guidance to minimize downtime and safeguard assets.

### Advanced User Management

Administrators can adjust user permissions flexibly, saving settings to specific groups for quick application when adding new users, enhancing management efficiency.

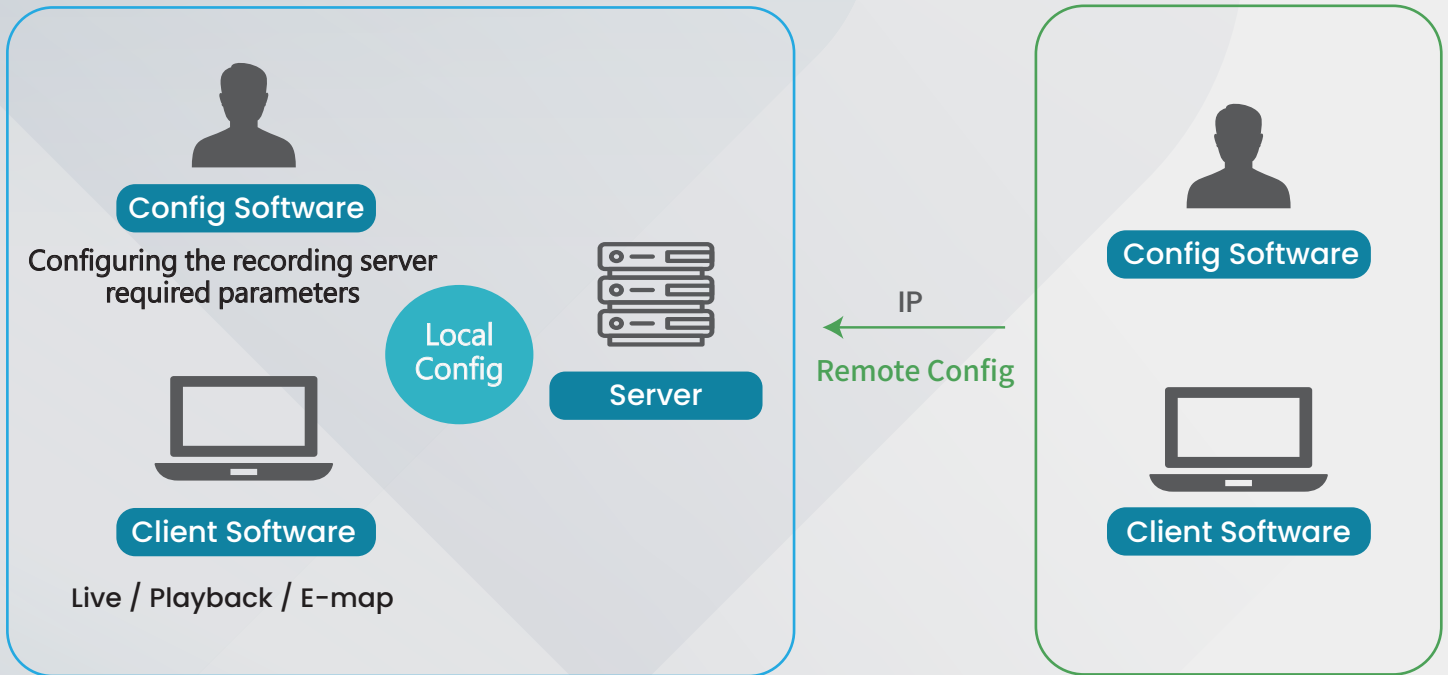




## System

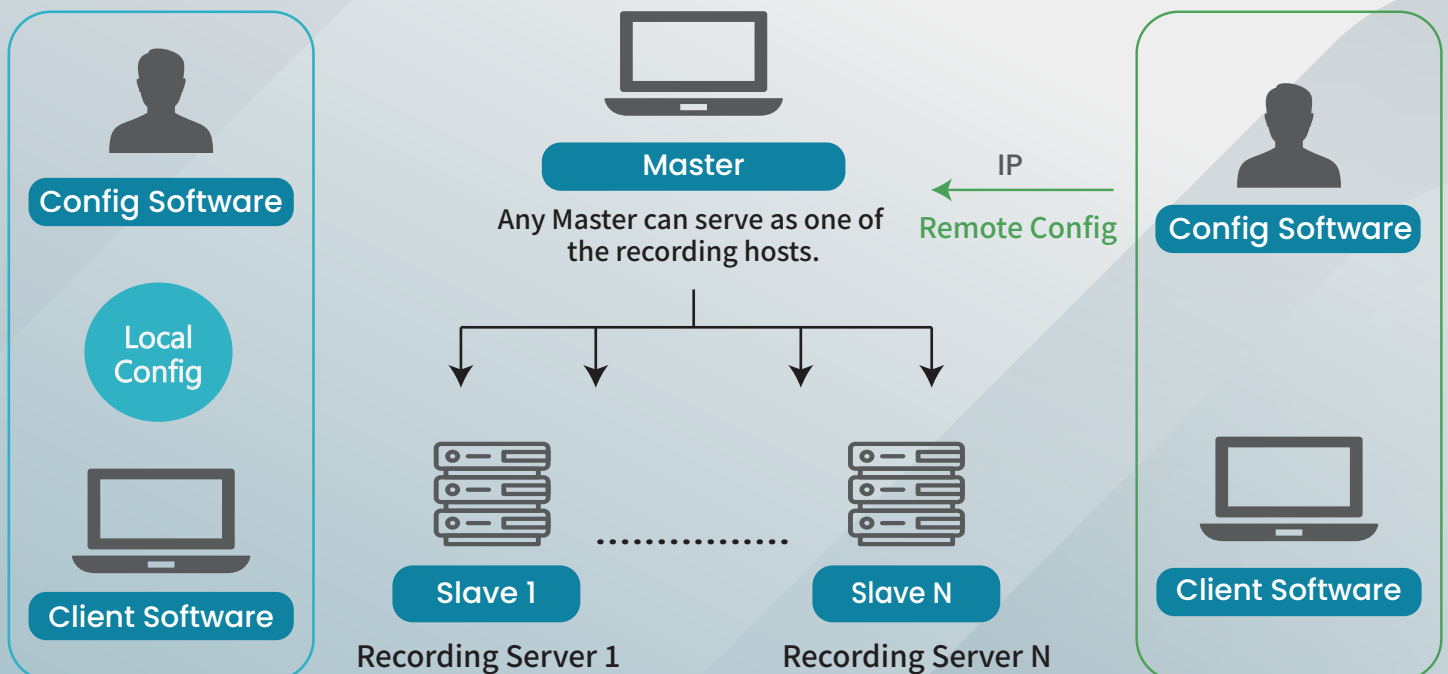
### Standalone

Users can configure the required parameters locally/remotely.



### Master/Slave

In addition to the Master server, users can easily add several servers as slave servers. With this structure, users can monitor and manage multiple screens at the same time.

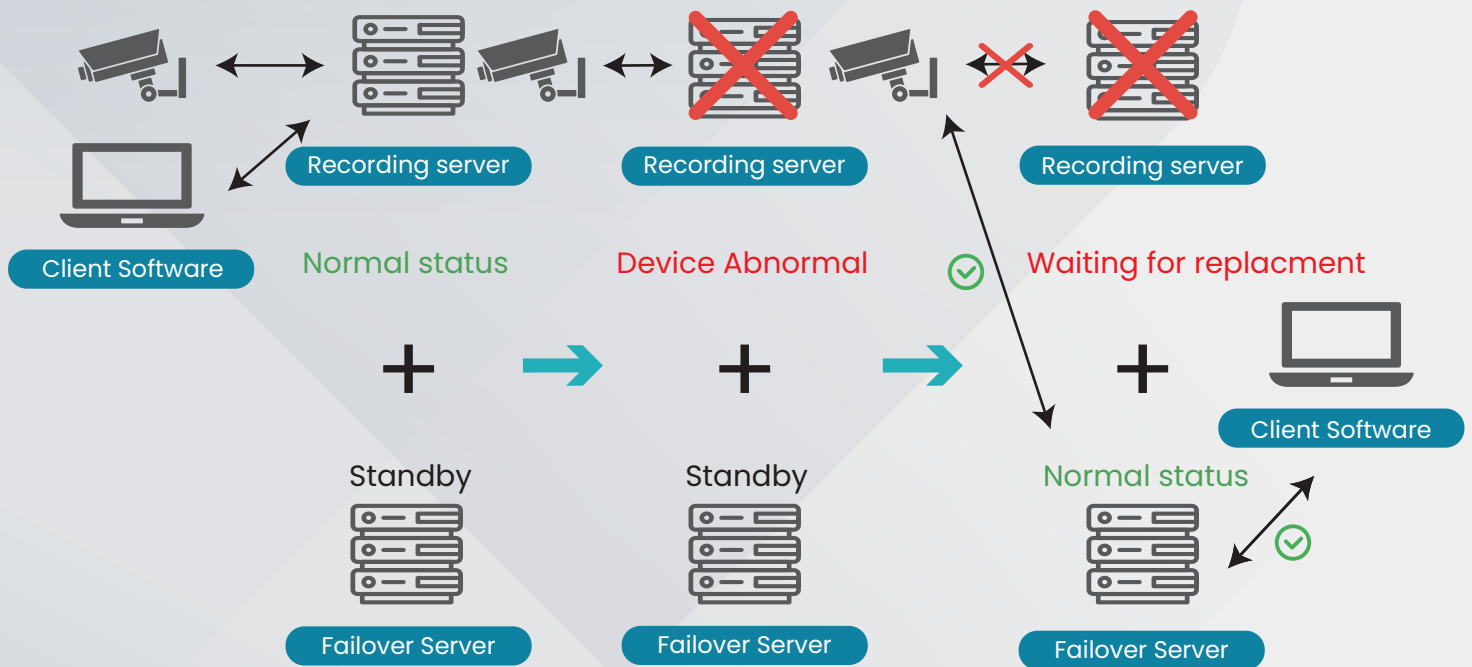




## Failover

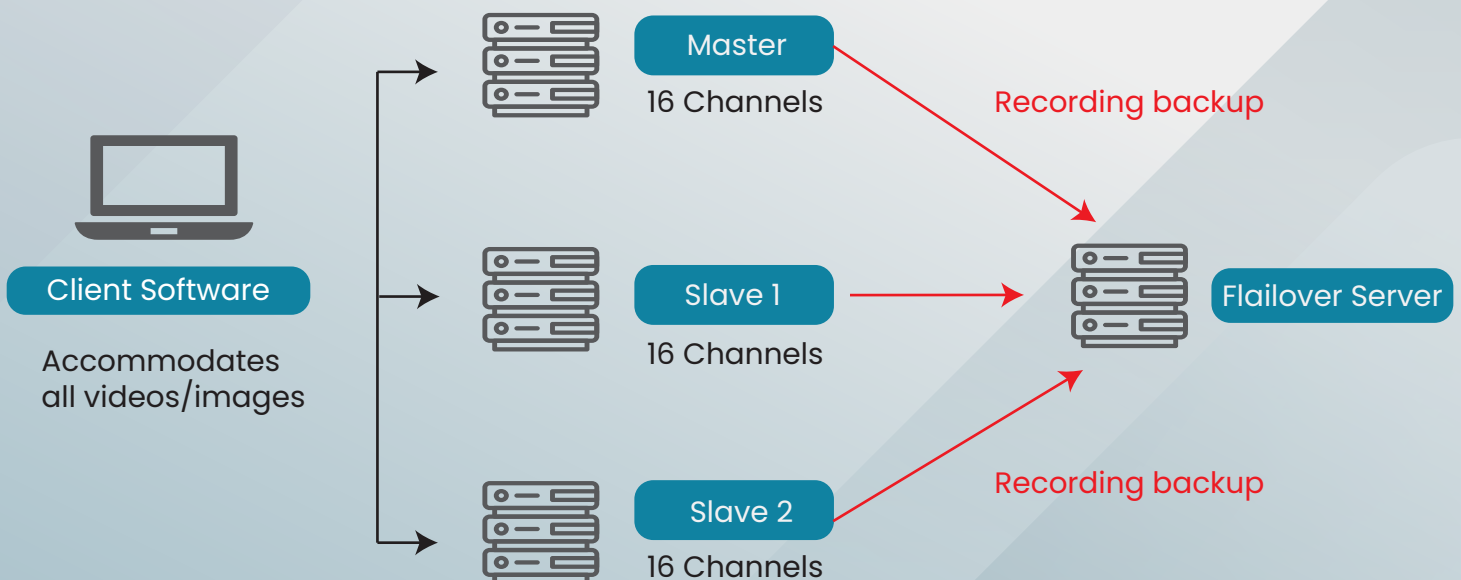
### Standalone N+1

When the original recording device malfunctions, the failover server will be activated.



### Master/Slave N+1

When any recording server malfunctions, the backup recording device will be activated





## Specification

### AI Management

AI Video Analytics	<ul style="list-style-type: none"> <li>-Human detection</li> <li>-Vehicle detection: car, motorbike, truck, bus, bicycle</li> <li>-Object detection</li> <li>-Density detection</li> <li>-Loitering detection</li> <li>-Cross-line detection</li> <li>-Cross-line counting</li> </ul>	<ul style="list-style-type: none"> <li>-Smoke detection*</li> <li>-Fire detection*</li> <li>-Multi-Country License Plate Recognition*</li> <li>-190 countries</li> <li>-4526 models</li> <li>-194 brands</li> <li>-12 colors</li> </ul>
--------------------	---	---

### Platform Management

Dashboard	<ul style="list-style-type: none"> <li>-Heatmap</li> <li>-Vehicle classification: car, motorbike, truck, bus, bicycle</li> </ul>	<ul style="list-style-type: none"> <li>-Counting(human, vehicle)</li> <li>-Charts(pie, bar, horizontal, line)</li> <li>-Exported (xlsx).</li> </ul>
E-map	<ul style="list-style-type: none"> <li>-Unlimited e-map layer</li> <li>-Unlimited device to map</li> <li>-View alarms on the map</li> <li>-Event pop-up</li> </ul>	<ul style="list-style-type: none"> <li>-Rephase device position</li> <li>-Rephase device angle</li> <li>-Color-coded camera alarm status differentiation</li> </ul>
Health Doctor	<ul style="list-style-type: none"> <li>-AI function anomaly</li> <li>-Disconnection anomaly (camera, network)</li> <li>-Device anomaly (intercom, I/O module)</li> </ul>	<ul style="list-style-type: none"> <li>- Hardware anomaly (host, hard drive)</li> <li>- CPU overload</li> </ul>
Real-time Notifications	<ul style="list-style-type: none"> <li>-E-mail</li> </ul>	<ul style="list-style-type: none"> <li>-LINE*</li> <li>-Grouped, scheduled</li> <li>-Customized with content.</li> <li>-Image (Interval 1-300 secs)</li> </ul>
Access Monitoring*	<ul style="list-style-type: none"> <li>-Real-time display of license plate</li> <li>-Access card number</li> </ul>	
Intercom Monitoring*	<ul style="list-style-type: none"> <li>- SIP two-way intercom</li> <li>- Video call</li> <li>- Emergency call alert</li> </ul>	

### Vision Management

Compatibility	Compatibility Spark cameras, Omnieye cameras, 3rd party cameras	
Operating System	Win 11 IoT, Support for multi-monitor output	
Language	Chinese, English, Italian, Japanese, Spanish	
Video Compression	H.265, H.264, MJPEG	
Audio Support	Two-way audio (Client)	
Liveview	<ul style="list-style-type: none"> <li>-Liveview</li> <li>-4 channel views (16 chs recording)</li> <li>-Customizable layout</li> <li>-Multi-stream management</li> </ul>	<ul style="list-style-type: none"> <li>-Event pop-up</li> <li>-Manual snapshot and recording</li> <li>-PTZ control</li> </ul>
Recording	<ul style="list-style-type: none"> <li>-16 channel recording (Max. 32 chs)</li> <li>-Continuous/Scheduled recording</li> <li>-Event recording</li> </ul>	<ul style="list-style-type: none"> <li>-Edge recover</li> <li>-Event pre/post recording</li> </ul>
Playback	<ul style="list-style-type: none"> <li>-Customizable layout</li> <li>-Instant playback</li> <li>-Synchronized playback</li> <li>-Date and timeline visualization</li> <li>-Manual snapshot</li> </ul>	<ul style="list-style-type: none"> <li>-Event playback</li> <li>-Playback speed controls</li> <li>-Fast forward: 1X, 1.5X, 2X, 4X, 8X, 16X, 32X, 64X, 128X</li> <li>-Fast forward slow playback: 0.125X, 0.25X, 0.5X</li> <li>-Rewind: 1X, 1.5X, 2X, 4X, 8X, 16X, 32X, 64X, 128X</li> <li>-Rewind slow playback: 0.125X, 0.25X, 0.5X</li> </ul>
Export	<ul style="list-style-type: none"> <li>-Export multiple video with selectable time range</li> <li>-Support MOV, MKV, MP4, AVI, Spark format</li> <li>-Support watermark</li> </ul>	
Certification	-CA	

Remark: Features marked with \* are optional.



## Specification

### Event & Alarm Management

Event Triggers	-Configurable based on device & schedule -AND/OR trigger conditions -Digital input -Camera analytics -AI analytics	-System related events -User related events -Device and network related events -Third party events (LPR, eTag)
Event Actions	-Configurable alarm SOP -Configurable alarm recipient -Recording (support Pre/post recording up to 300 secs) -Digital output	-Email & LINE* notification -PTZ preset -PTZ tour
Alarm Settings	-Configurable alarm workflow -Alarm trigger scheduling	- Set alarm recipients
Alarm Reception	-Alarm management system -Client alert sound	-Alarm record query database -Pop-up alarm event view

### System management

User Privilege	-Configurable based on camera, function and schedule	
Camera Management	-Support basic camera settings	
Third-party Device Management*	-Supports 24GHz radar, which can be used in conjunction with cameras for perimeter protection. -I/O module -LPR Camera	-eTag, RFID reader -LED display

### ASUS IoT X86 Server

Model	SR-S-AIVMS-Mini
Processor	Intel® i5 Processor, I2500E
Display Interface	-DP × 1 -HDMI × 2
Integrated Graphics	UHD Graphics 770
I/O Port	-USB 3.2 × 4 -USB 2.0 × 4 -Audio Jack × 2 -1 PCIe 4.0 x16 -2 M.2 1× M.2 with E key, type 2230 for WIFI / BT device (PCIe & CNVi) 1× M.2 with M key, type 2242 / 2260 / 2280
Memory	SO-DIMM, DDR4 16GB (Max. 64GB)
HDD	1× 3.5" or 2× 2.5" or 1× 3.5" + 1× 2.5" HDD, Max. supports 16T 3.5" recording specific disc.
Network	RJ-45 (10/100/1000Mbps) Network ports × 2
Fan	Yes, CPU/Internal case
Power	Flex ATX 250W Gold
Dimensions	255×230×88 mm (W×D×H)
Certification	FCC / CE / RoHS
Operating Temp	0°C ~ 60°C